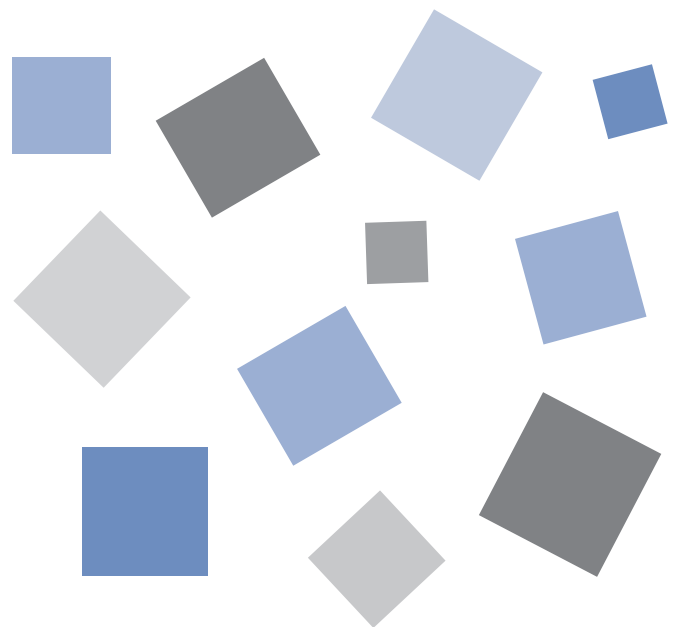


USB Driver



Installation manual

MANUAL NO. GL-USB-UM-151



GRAPHTEC

Installation for Windows7 USB Driver

When using the application software for GL200A, GL800, GL900, GL1000/1100, MT100 with Windows7, it is required to have USB driver version 2.03 or higher.

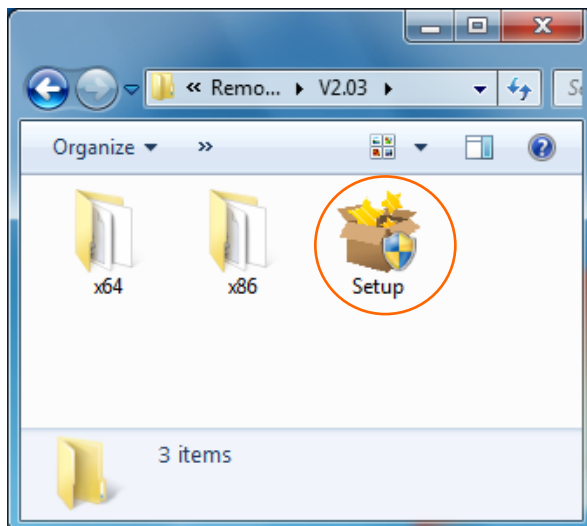
This manual explains the procedures for installing the USB driver version 2.03.

1. Preparation before Installation

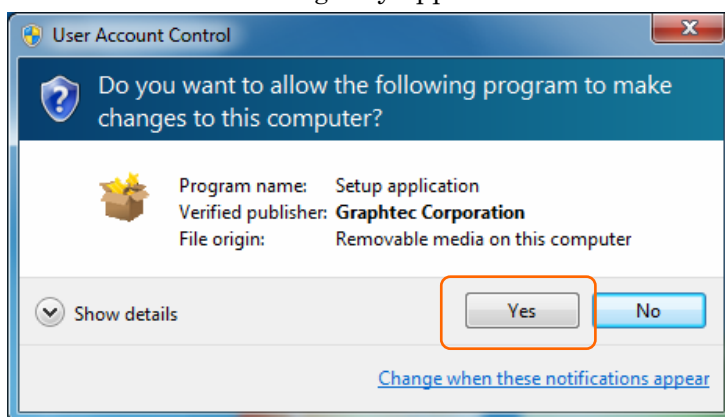
- Download the recent USB driver (equal to or higher than version 2.03) from our home page.
- Confirm GL series or MT100 is not connected to your PC using the USB cable.
If it is connected to your PC, disconnect the USB cable.
- Close all the other software.

2. Installation Procedures

(1) Start\USB Driver\Setup.exe. (Double click the Setup or Setup.exe.)

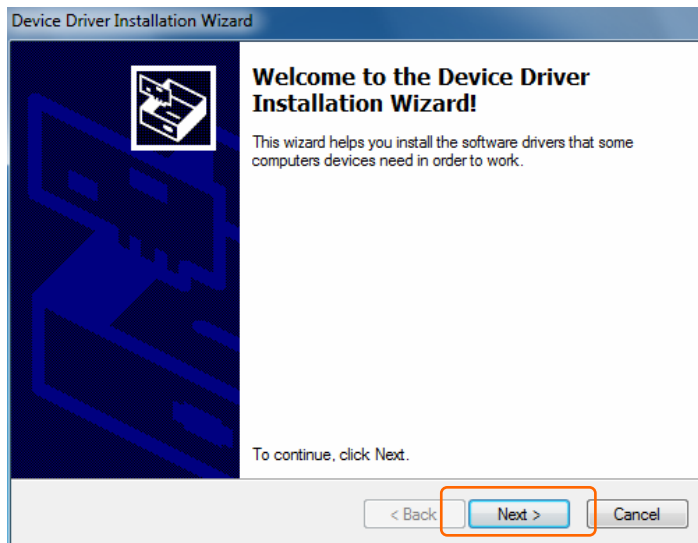


(2) User Account Control dialog may appear.



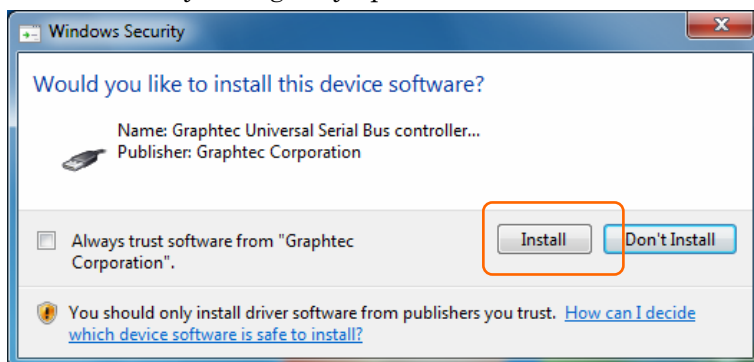
Press Yes button when the User Account Control dialog appears.

(3) Device Driver Installation Wizard starts.



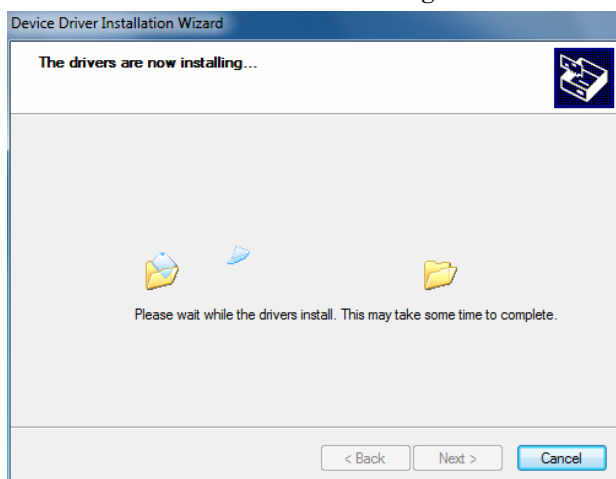
Press the Next button.

(4) Windows Security dialog may opens.

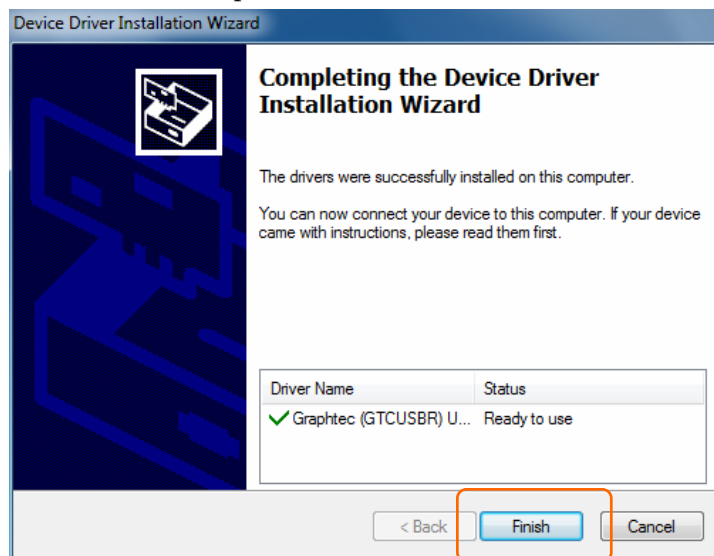


Press Install button.

(5) The driver software starts installing.



(6) The installation completes.

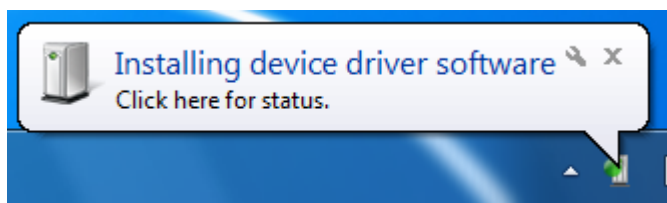


Press Finish button to exit the Setup.

(7) Turn on the GL series or MT100 and wait for a while till the initialization of device is completed.

Connect GL series or MT100 to your PC using the USB cable.

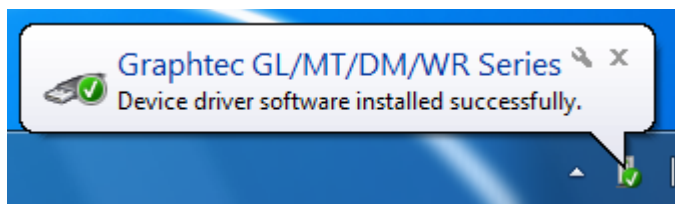
When you connect it for the first time, the balloon message “Installing device driver software” appears on the right bottom corner on the display, so please wait for a moment. (It will never appear again after the next connection of your device to your PC.)



After a while, the balloon message shown below appears.

Be sure to wait till the balloon message appears.

If the balloon message does not appear after passing more than 10 min., reconnect your USB cable again.



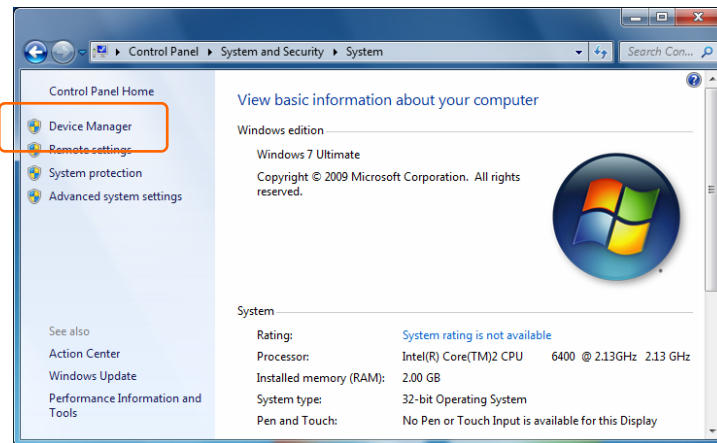
3. Device Driver Confirmation Procedures

Confirm that the USB driver is correctly installed by the procedures below.

When confirming, turn on GL series or MT100 and connect it to your PC using the USB cable.

(1) Select Device Manager in the System of the System and Security on the Control pane.

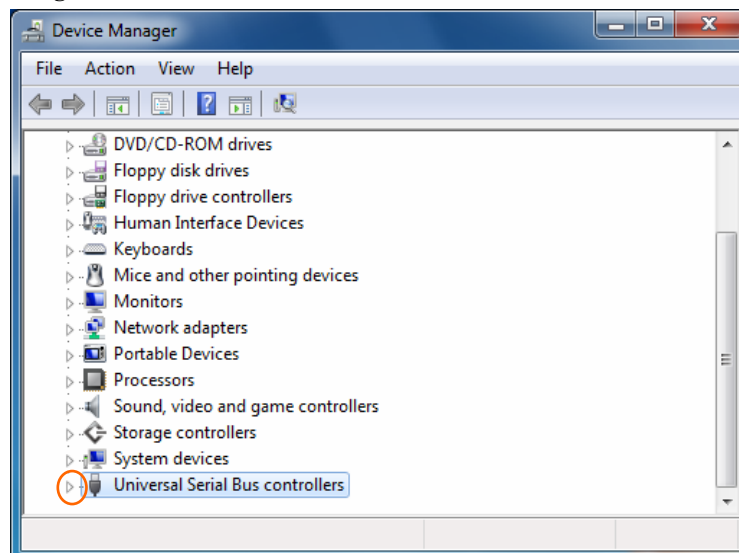
(Control panel → System and Security → System → Device Manager)



(2) User Account Control dialog may apperas.

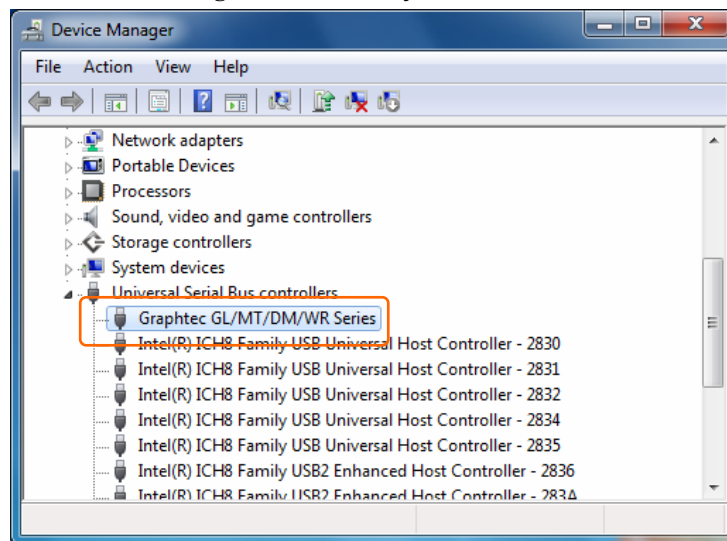
When the User Account Control dialog is displayed, press Continue button.

(3) Device Manager starts.



Click the white triangle next to the Universal Serial Bus controllers and open the tree structure.

(4) Confirm the driver is recognized correctly.



Confirm that the name of Graphtec GL/MT/DM/WR Series is registered and that there is no X or ! mark beside the name

Now the USB driver installation finishes.

Registered trademark information:

- Microsoft and Windows are registered trademarks of Microsoft Corporation USA in the United States and the other countries.
- The company names and product names written in this manual are registered trademarks or trademarks.



Specifications are subject to change without notice.

USB Driver Installation manual

GL-USB-UM-151

December 20, 2009 1st edition-01

GRAPHTEC CORPORATION
