

UPGRADING THE FIRMWARE

The version of your GL1x00's firmware can be upgraded by rewriting the flash ROM on the pertinent circuit boards using a choice of methods. You can upgrade the firmware by loading the update program from either a personal computer via the PC or from a PCMCIA card.

1 How to Upgrade the GL1x00 Flash ROM from the PCMCIA Card

Preparations for the upgrade

Firmware :MxxxA001.G10 ← Main Program file for GL1x00
 :MxxxA002.G10 ← Main Program file for GL1x00
 :SxxxA001.G10 ← Sub Program file for printer

If the optional printer is not connected

- (1) Connect the AC adapter for the GL1x00.
- (2) Copy the two main program files to PCMCIA card from computer. (Do not copy the sub program and other files to this PCMCIA card.)

If the optional printer is connected

- (1) Connect the GL1x00 to the printer.
- (2) Connect the AC adapter for the GL1x00.
- (3) Connect the AC adapter for the printer.
- (4) Copy the two main program files from the computer to a PCMCIA card. (Do not copy the sub program and other files to this PCMCIA card.)
- (5) Copy the sub program files from the computer to another PCMCIA card. (Do not copy the main programs and other files to this PCMCIA card.)

How to upgrade

- (1) Insert the PCMCIA card containing the main upgrade program into the GL1x00's PCMCIA card slot.
- (2) Turn on the GL1x00 to automatically execute the upgrade program.
- (3) Wait until the display shown below appears or until the LED goes out.

If the display monitor is installed.

The following message will appear on the GL1x00 display in yellow characters until the upgrade is complete.

"Please Turn Off the Power. I have locked up."

If the display monitor is not installed.

The LED on the left front panel of the GL1x00 will flash during the upgrade.

The LED will go out when the upgrading is complete.

If the upgrading failed the LED will not go out. (will stay lit)

- (4) Turn off the power to the GL1x00 when the above message is displayed or when the LED goes out.
- (5) If you have the printer option, insert the PCMCIA card containing the sub upgrade program into the GL1x00's PCMCIA card slot.

- (6) Turn on the GL1x00 to automatically execute the upgrade program.
- (7) Wait until the display shown below appears or until the LED goes out.

If the display monitor is installed.

The following message will appear on the GL1x00 display in yellow characters when the upgrade is complete.

“Please Turn Off the Power. I have locked up.”

If the display monitor is not installed.

The LED on the left front panel of the GL1x00 will flash during the upgrade.

The LED will go out when the upgrading is complete.

If the upgrading failed the LED will not go out. (will stay lit)

- (8) Turn off the power to the GL1x00 when the above message is displayed or when the LED goes out.

2 How to Upgrade the GL1x00 Flash ROM from the PC

Preparations for the upgrade

If the optional printer is not connected

- (1) Connect the AC adapter for the GL1x00.
- (2) Connect the LAN cable for the GL1x00 and PC. (If you connect P to P, use a cross LAN cable. If you connect with a hub, use a parallel LAN Cable.)

or

Connect the USB cable for the GL1x00 and PC.

If the optional printer is connected

- (1) Connect the GL1x00 to the printer.
- (2) Connect the AC adapter for the GL1x00.
- (3) Connect the AC adapter for the printer.
- (4) Connect the LAN cable for the GL1x00 and the PC.

(If you connect P to P, use a cross LAN cable. If you connect with a hub, use a parallel LAN Cable.)

or

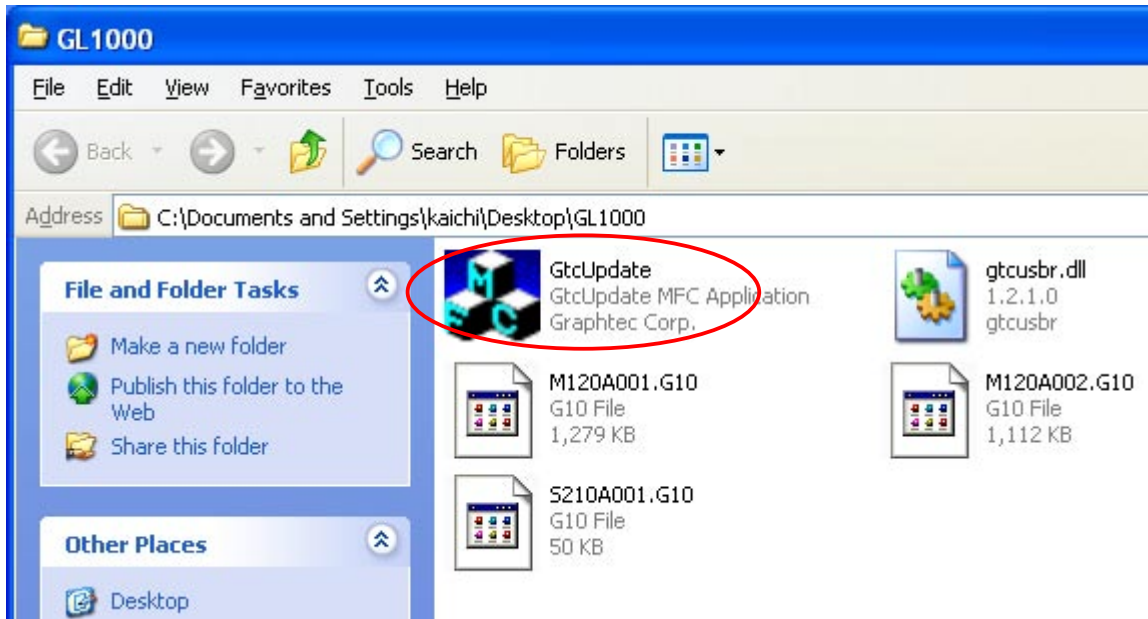
Connect the USB cable for the GL1x00 and PC.

How to upgrade

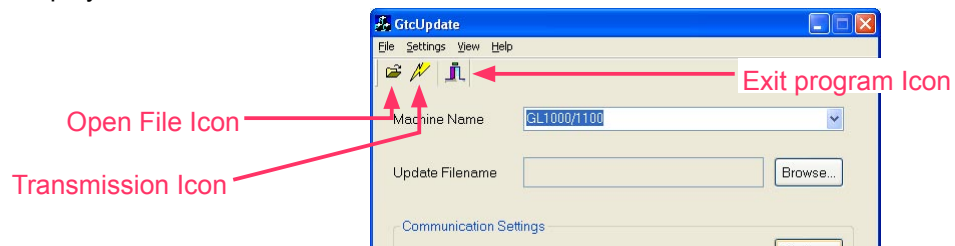
OS	:Windows 2000/XP
Software	:GtcUpdate.exe ← Upgrade software file
	:Gtcusbr.dll ← Upgrade software dll file
Firmware	:MxxxA001.G10 ← Main Program file for GL1x00
	:MxxxA002.G10 ← Main Program file for GL1x00
	:SxxxA001.G10 ← Sub Program file for printer

- (1) Copy the upgrade software files to the same directory in the PC.
- (2) Turn on the power switch of the GL1x00.

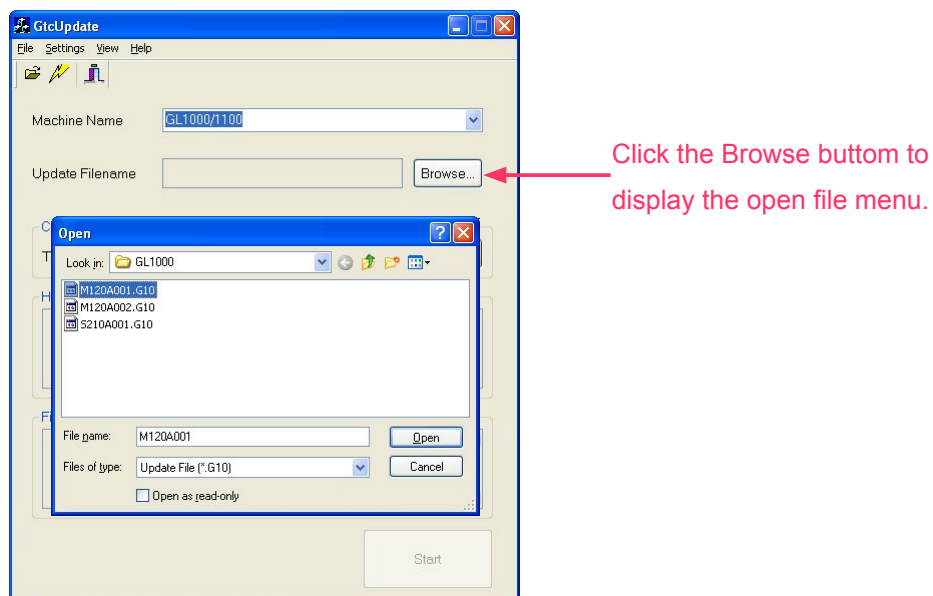
(3) Execute GtcUpdate.exe.



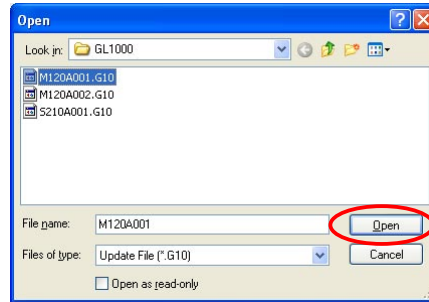
(4) Display the menu as below.



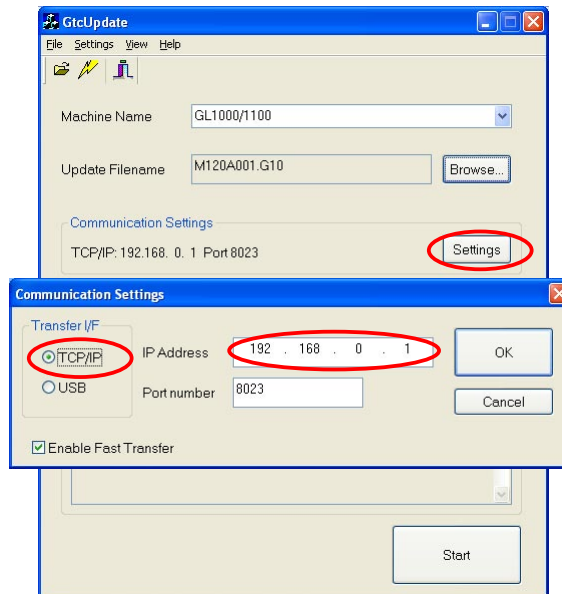
(5) Click the Browse button to show the menu as below.



- (6) Select the main update file as "Mxxxa001.G10, and then click the Open Button.



- (7) If you connecting to the TCP/IP port, click the transmission settings button to set up the TCP/IP conditions.



Click the Transfer I/F of TCP/IP to use TCP/IP port.

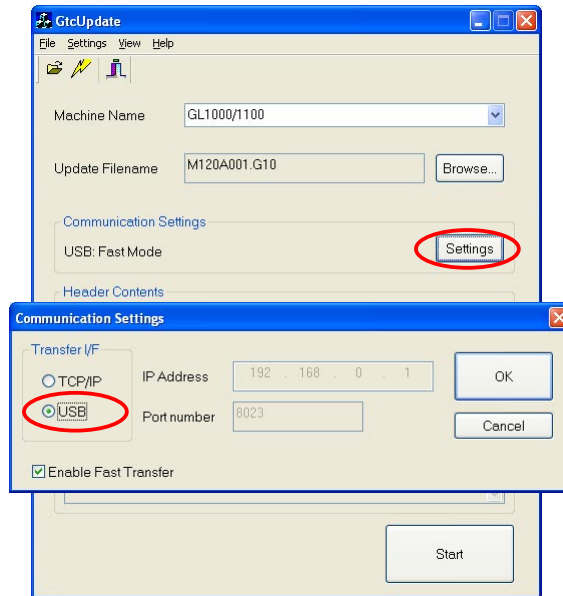
The default setting for GL1x00 is set to "192.168.0.1".

If you haven't changed it, use this setting.

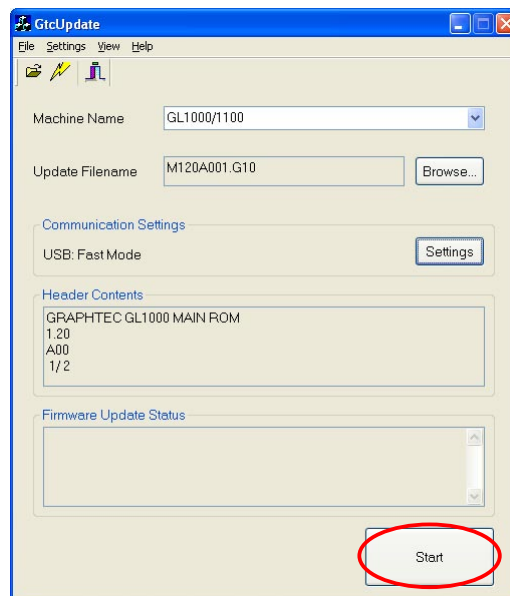
Also, your computer's TCP/IP port setting must be set to the same segment as "192.168.0.X".

- (7) If you connecting to the USB port, click the transmission settings button to set up the USB conditions.

Click the Transfer I/F of TCP/IP to use TCP/IP port.



- (8) Click the Start button to start upgrading when you are ready to upgrade.



If the display monitor is installed.

The following message will appear on the GL1x00 display in yellow characters when the upgrade is complete.

“Please Turn Off the Power. I have locked up.”

If the display monitor is not installed.

The LED on the left front panel of the GL1x00 will flash during the upgrade.

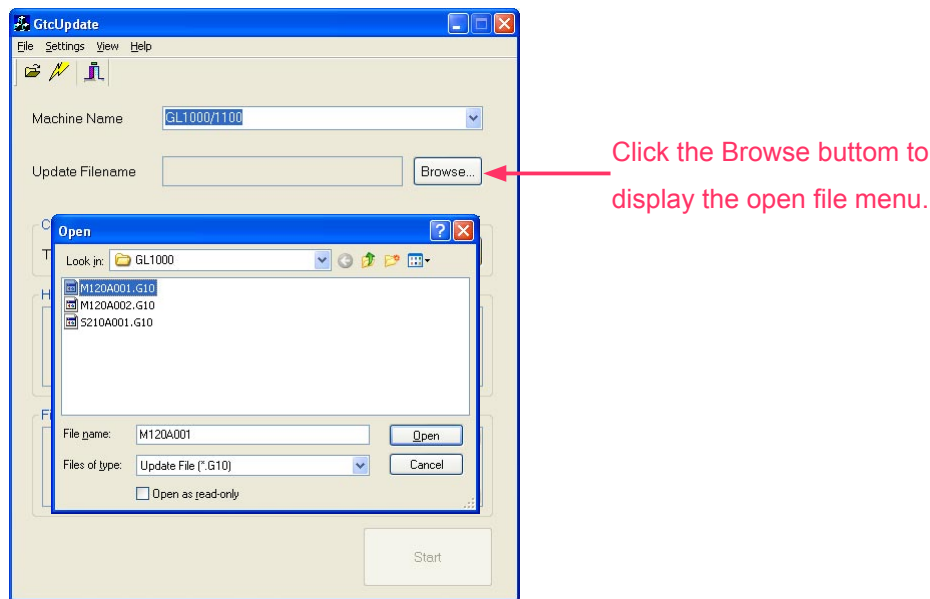
The LED will go out when the upgrading is complete.

If the upgrading failed the LED will not go out. (will stay lit)

- (9) Turn off the power to the GL1x00 when the above message is displayed or when the LED goes out.

(10) If you connected the printer, then turn on the power of the GL1x00 again.

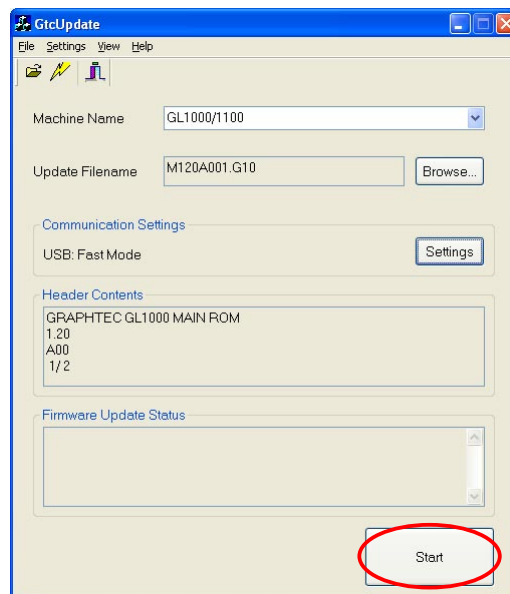
(11) Click the Browse button to show the menu as below.



(12) Select the sub update file "Sxxxa001.G10 to upgrade the printer firmware.

(13) Click the Open Button.

(15) Click the Start button to start upgrading when you are ready to upgrade.



If the display monitor is installed.

The following message will appear on the GL1x00 display in yellow characters when the upgrade is complete.

"Please Turn Off the Power. I have locked up."

If the display monitor is not installed.

The LED on the left front panel of the GL1x00 will flash during the upgrade.

The LED will go out when the upgrading is complete.

If the upgrading failed, the LED will not go out. (will stay lit)

GL1000 Updating the Firmware

- (16) Turn off the power to the GL1x00 when the above message is displayed or when the LED goes out.
- (17) Click the Exit icon to exit this upgrade program.

