

UPGRADING THE FIRMWARE

The version of your GL500's firmware can be upgraded by rewriting the flash ROM on the pertinent circuit boards using a choice of methods. You can upgrade the firmware by loading the upgrade program from either a PCMCIA card or from a personal computer via the TCP/IP or USB port.

1 How to Upgrade the GL500 Flash ROM from the PCMCIA Card

Preparations for the upgrade

Firmware :Mxxxa001.G50 ← Main Program file for GL500

:Mxxxa002.G50 ← Main Program file for GL500

- (1) Connect the AC adapter for the GL500.
- (2) Turn on the GL500 and then adjust the monitor contrast using the monitor control dial when you are going to upgrade the GL500.

Turn off the GL500 after adjust the monitor contrast.

- (3) Copy the two main program files to a PCMCIA card from the computer.

How to upgrade

- (1) Insert the PCMCIA card containing the main upgrade program into the GL500's PCMCIA card slot.
- (2) Turn on the GL500 to automatically execute the upgrade program.
- (3) Wait until the display shown below appears or until the beeper sound stops.

Note:

Don't turn off the GL500 until this process is finished.

The following message will appear on the GL500 display in yellow characters when the upgrade is complete. Also, the beeper will sound for 5 seconds.

"Please Turn Off the Power. I have locked up."

Note:

Adjust the the monitor contrast using the monitor control dial when the above message will not appear on the GL500.

- (4) Turn off the power to the GL500 when the above message is displayed or when the beeper sound stops.
- (5) **Delete the two main program files in a PCMCIA card from the computer.**
This is avoiding to upgrade by mistake.

2 How to Upgrade the GL500 Flash ROM from the TCP/IP or USB Port

Preparations for the upgrade

- (1) Connect the AC adapter for the GL500.
- (2) Connect the LAN cable or USB cable for the GL500 and PC.
When using the TCP/IP port for the upgrade, use a cross LAN cable if you connect P to P. If you connect via a hub, use a parallel LAN cable.
- (3) If you are going to use the TCP/IP port for the upgrade, confirm the IP address of the GL500 as shown below.

The default settings for the GL500 are set as follows.

IP Address: 192.168.0.1

Subnet mask: 255.255.255.0

Port number: 8023

If you haven't changed them, use these settings.

Also, your computer's TCP/IP port setting must be set to the same segment as "192.168.0.X".

AMP	CRNT	EVNT	CALC	FILE	I/F	OTHR	INFO
[Interface] *****							
New Line Code:					CR+LF		
Echo Back:					Disable		
[USB Settings]							
USB ID:					0		
[TCP/IP Settings]							
IP Address:					192 . 168 . 0 . 1		
Subnet Mask:					255 . 255 . 255 . 0		
Port Number:					8023		
Note: Restart to enable USB, TCP-IP settings.							

How to upgrade

OS :Windows 2000/XP

Software :GL50upd.exe ← Upgrade software file

:xxx.dll ← Upgrade software dll file

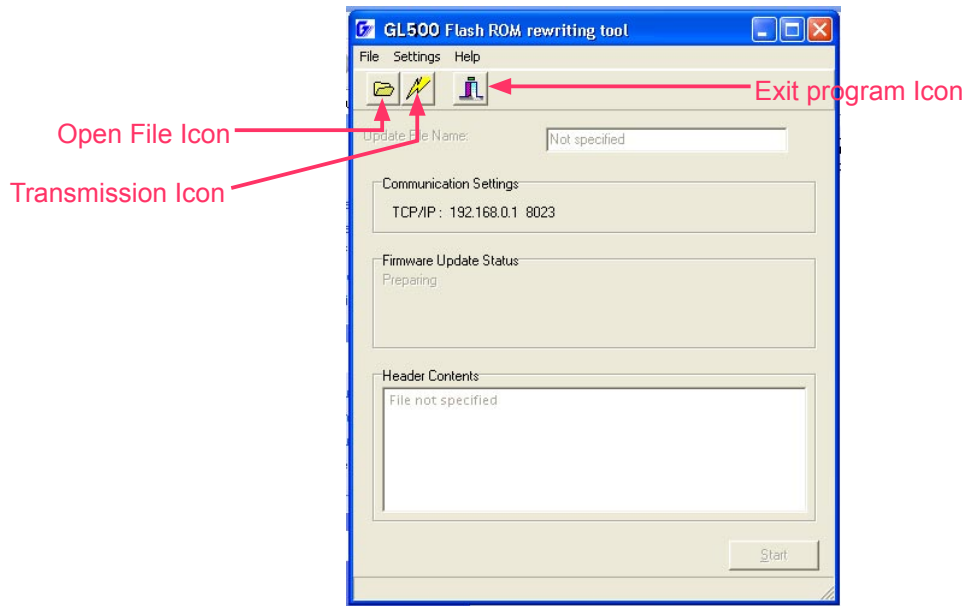
Firmware :Mxxxa001.G50 ← Main Program file for GL500

:Mxxxa002.G50 ← Main Program file for GL500

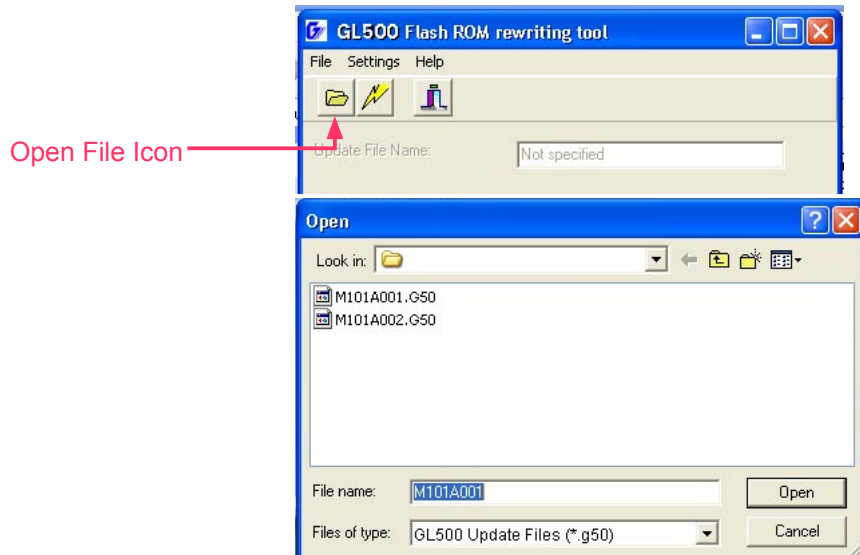
- (1) Copy the two upgrade software files to the same directory in the PC.
- (2) Turn on the power switch of the GL500.
- (3) Execute GL50upd.exe.



(4) The menu shown below is displayed.

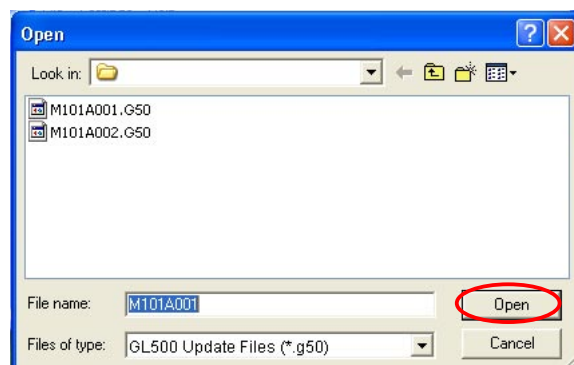


(5) Click the Open File icon to display the Open menu.

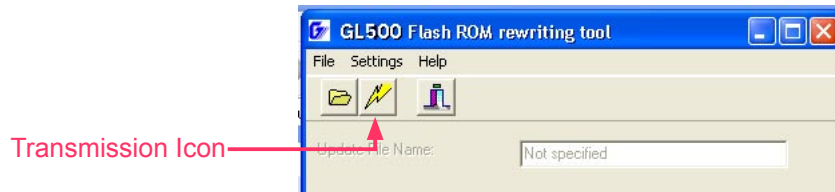


(6) Select "MxxxA001.G50" as the main upgrade file.

(7) Click the Open Button.



- (8) If you need to change the TCP/IP settings or port, click the transmission icon to set up the TCP/IP conditions or port.



The default settings for the GL500 are set as follows.

IP Address: 192.168.0.1

Port number: 8023

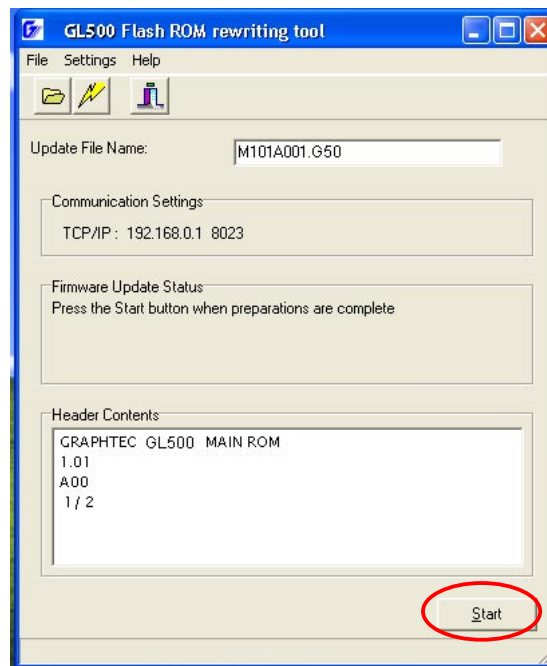
If you haven't changed them, use these settings.

Also, your computer's TCP/IP port setting must be set to the same segment as "192.168.0.X".



If you are using the USB port, select USB for Transfer I/F in the above menu.

- (9) Click the Start button to start upgrading when you are ready to upgrade.



The following message will appear on the GL500 display in yellow characters when the upgrade is complete. Also, the beeper will sound for 5 seconds.

"Please Turn Off the Power. I have locked up."

- (10) Turn off the power to the GL500 when the above message is displayed or when the beeper sound stops.